

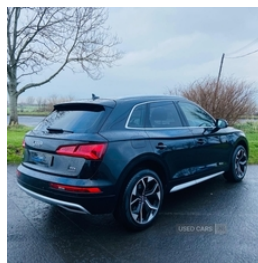
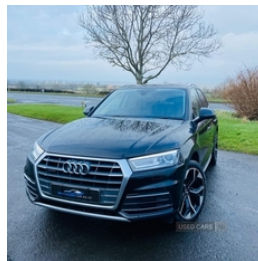


BT49 9JE 319 Clooney Road Ballykelly, Limaady, County Londonderry/Derry Contact us on 078 9404 2874
Finance Available With Nil Deposits For All Ages., Limavady, BT49 9JE
Sean: 078 9404 2874 | Niall: 079 2877 1030

Audi Q5 2.0 TDI Quattro Sport 5dr S Tronic | 2018

**NEW TIMING BELT KIT / SOLD WITH 1 YEAR MOT / HEATED
LEATHER**

£17,945



TIMING BELT KIT & WATERPUMP,
MOT 19 MARCH 2026,
HEATED BLACK LEATHER,
PARKING SENSORS,
SAT NAV,
BLUETOOTH,
D.A.B RADIO,
UPGRADED ALLOYS FROM £845

Vehicle Features

2 USB ports, 3 point seatbelts on all seats, 3 rear headrests, 3 Spoke leather multi function steering wheel, 3 zone climate control, 4 way electric lumbar support for driver and front passenger, 40:20:40 split folding rear seat, ABS, Acoustic windscreen, Aluminium rhombus inlay, Aluminium sill plates, Audi connect, Audi drive select, Audi smartphone interface, Audi sound system, Auto dimming rear view mirror, Auxiliary input socket, Black high gloss front air inlet in matt aluminium effect, Body colour bumpers, Body colour door mirrors, Body colour rear diffuser insert, CD player, Chrome exhaust tailpipe, Cloth headlining, Curtain airbags, DAB Digital radio, Diesel particulate filter, Driver and passenger airbags, Driver and passenger side airbags, Driver information centre with colour display in instrument panel, Electrically adjustable and heated door mirrors, Electric headlight adjustment, Electric park A - Transporter, Electric power steering, Electromechanical parking brake, ESC with ASR, ESP, First aid kit, Front/rear floor mats, Front and rear electric windows, Front centre armrest with 12v

Miles:	79000
Fuel Type:	Diesel
Transmission:	Semi-Automatic
Colour:	Black
Engine Size:	1968
CO2 Emission:	132
Tax Band:	Petrol/Diesel (£195 p/a)
Body Style:	Sport utility vehicle
Insurance group:	27E
Reg:	GJ18XHA

Technical Specs

DIMENSIONS	
Length:	4663mm
Width:	1893mm
Height:	Not Availablemm
Seats:	5
Gross Weight:	2440KG
Max. Loading Weight:	745KG

PERFORMANCE & ECONOMY

Fuel Consum. (Urban Cold):	52.3MPG
Fuel Consum. (Extra Urban):	58.9MPG
Fuel Consum. (Combined):	56.5MPG
Fuel Tank Capacity:	65L
Number Of Gears:	7 SPEED
Top Speed:	135MPH
Acceleration 0-100 km/h:	7.9s
Engine Power BHP:	187.7BHP

socket, Front fog lights, Front passenger airbag deactivation, Front sports seats, Headlight range control, Headlight washers, Height adjustable driver's seat, Hill descent control, Isofix front passenger and rear seat preparation, Jack and tool kit, Keyless Go access/ignition system, Light and rain sensor for auto activation of lights and windscreen wipers, Load compartment cover, Loading sill protector in stainless steel, Locking wheel bolts, Luggage compartment carpet, Matt selenite silver door inserts, MMI radio plus with 7" colour MMI screen and MMI controller, Non Smokers pack, Power tailgate, Reach + rake adjustable steering column, Rear diffuser strip in selenite silver, Rear spoiler, Rear wiper, Remote central locking, Remote electric boot opening/closing, Removable luggage compartment floor, Removable net partition, Roller blind loadspace cover, SD card based MMI navigation, Seat belt force limiter, Seatbelt warning lamp, Selenite silver underbody guard, Service interval indicator, Sunvisors with vanity mirrors, Thatcham category 1 alarm + immobiliser, Traction control, Twilight grey matt radiator grille with matt aluminium horizontal chrome struts, Tyre pressure monitor, Under hood engine cover, Voice control system, Warning triangle